

Fluon® LM ETFE is a modified copolymer of tetrafluoroethylene and ethylene that can be processed by conventional thermoplastic techniques.

Fluon® LM ETFE combines the excellent performance of conventional ETFE with a lower melting point, improved thermal stability, increased flexibility, smoother surface finish and lower gas permeation properties.

Film with excellent transparency can be produced from Fluon® LM ETFE.

Fluon® LM ETFE has a wide operating temperature range (-180° to +150°C) and is supplied as solid, cylindrical pellets.

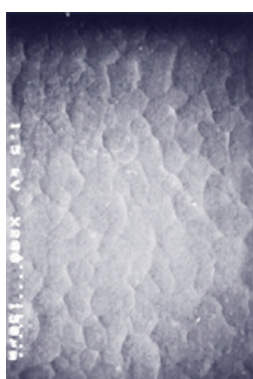
This information sheet contains typical property data which should not be used for specification purposes.

(Fluon® is a trademark of Asahi Glass Company)

Fluon® LM-ETFE Grades

Grade	MFR g/10 mins	mpt (°C)	S.G.	Oxygen Index (%)	TS (MPa)	Elongn. (%)	Processing	Applications
	D3159		D792	D2863	D638	D638		
LM-720AP	10 - 20	225	1.78	40	43	380	Extrusion Injection moulding	Tubing, film, wire coating
LM-730AP	20 - 30	225	1.78	40	40	400	Extrusion Injection moulding	Tubing, film, wire coating
LM-740AP	30 - 40	225	1.78	40	38	420	Extrusion Injection moulding	Tubing, film, thin wall wire coating
C88AXP*	12	260	1.73	31	46	430	Extrusion Injection moulding	Tubing, film, wire coating

*Conventional ETFE shown for comparison



PFA



ETFE



LM ETFE

Surface smoothness

Fluon® LM products have very smooth surface finish properties. (images taken using SEM)

Surface of extruded tube (8mm OD / 6mm ID)

AGC Chemicals Europe, Ltd.,
 PO Box 4, York House,
 Hillhouse International,
 Thornton Cleveleys,
 Lancashire
 UK
 FY5 4QD
 Tel: +44 (0) 1253 861951
 Fax: +44 (0) 1253 861950
 email: info@agcce.com
 www.agcce.com

